

Retaining Wall Repair

Medway Police Station, Kent

Client

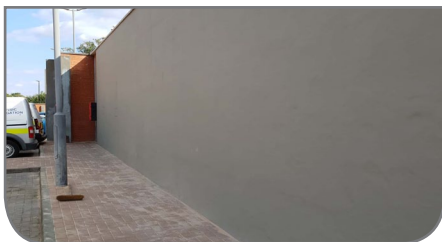
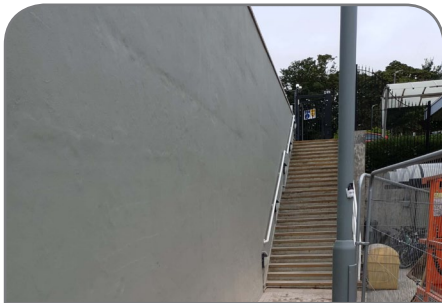
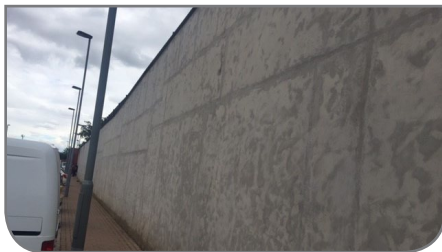
Vinci Construction UK Facilities

Works Commenced

July 2018

Works Completed

August 2018



Freyssinet was instructed to carry out the repair of a retaining wall at Medway Police Station in Gillingham, Kent. The Client requested the wall be repaired and protected with a fairing coat and anti-carbonation paint.

Freyssinet carried out:

- A hammer tap survey of each repair area and marked out the extent of the repair
- Breaking out of damaged concrete
- Any structural repairs required
- The removal of existing contamination including laitance, paint, coating, oil, grease and dust by high pressure jetting
- Installation of a fairing coat
- Installation of anti-carbonation paint

The works also included re-painting of handrails, re-sanding the pathway and cleaning of the coping stone.

Freyssinet selected the Mapei and Sika EN1504 compliant range of materials for the wall refurbishment, and Hammerite satin paint finish to the balustrades, handrails and gate to match the existing colour scheme.

The retaining wall was located inside the police station car park, which was operational to car park users during all work phases. Extreme care was taken to ensure the works had minimum impact on members of the public using the station. All work areas were segregated from all other activities, specific tools to minimize dust were used, and an exclusion zone was set up around Freyssinet's working area.

The works were completed successfully in two weeks.